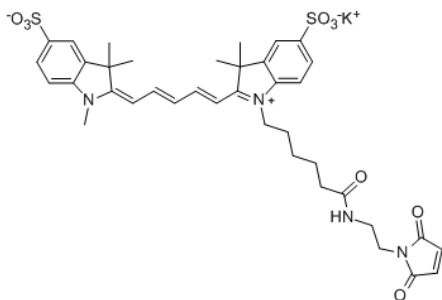


## Sulfo-Cyanine5 maleimide

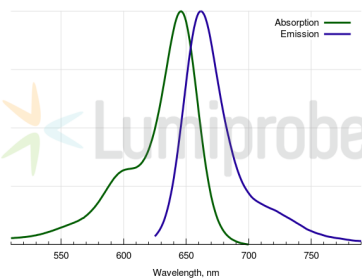
A water soluble, hydrophilic sulfo-Cyanine5 maleimide (Cy5® maleimide analog). We recommend this product for protein labeling, including labeling of antibodies as a perfect replacement for Cy5® maleimide. Labeled proteins can be easily separated from unreacted dye by gel filtration, spin column purification, dialysis, electrophoresis or chromatography.

An analog without sulfo groups, Cyanine5 maleimide, is also available.



Quantity	Cat. #
1 mg	13380
5 mg	23380
25 mg	43380
50 mg	53380
100 mg	63380

Absorption and emission spectra of sulfo-Cyanine5 fluorophore



### General properties

Appearance:	dark blue powder
Molecular weight:	803.00
Molecular formula:	$C_{38}H_{43}KN_4O_7S_2$
Solubility:	soluble in water, DMSO, DMF
Quality control:	NMR $^1H$ , HPLC-MS (95+%)
Storage conditions:	Storage: 24 months after receipt at $-20^\circ C$ in the dark. Transportation: at room temperature for up to 3 weeks. Avoid prolonged exposure to light. Desiccate.

### Spectral properties

Excitation maximum, nm:	646
$\epsilon$ , $L \cdot mol^{-1} \cdot cm^{-1}$ :	271000
Emission maximum, nm:	662
Fluorescence quantum yield:	0.2
$CF_{260}$ :	0.13
$CF_{280}$ :	0.13

